

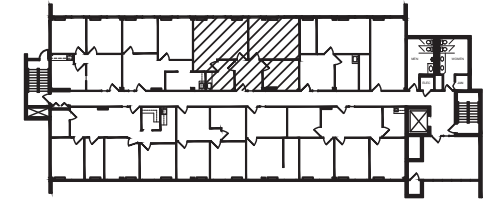
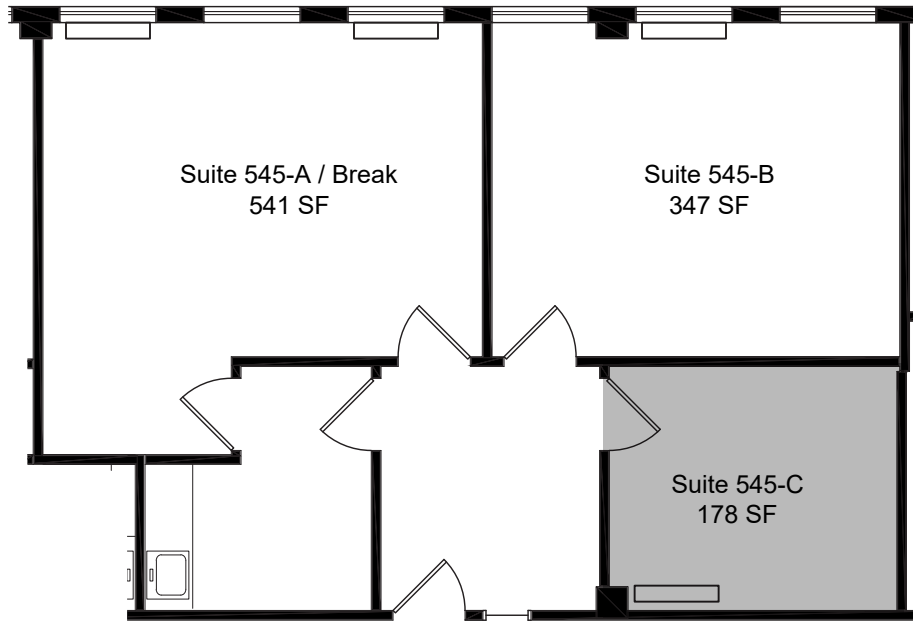
# BOULEVARD 25 - 1805 South Bellaire Street

Scale: 1/8" = 1'-0"

## Level 5



April 2, 2024



KEY PLAN

SUITE 545  
SCALE: 1/8" = 1'-0"



boulevard **25**



**MATRIX**  
GROUP, INC.

Lauren Quiram, Director of Leasing  
lquiram@matrixgroupinc.com  
(303) 300-5271